



# City on a Hill Charter Public School – Dudley Square

2179 Washington Street | Roxbury, MA 02119

617-516-5888 | www.cityonahill.org

Sonya Pratt, Principal

Laura Edouard, Vice-Principal

**Linda Edmond, M.Ed.**, ledmond@cityonahill.org  
College and Career Counselor

**CEEB CODE: 222068**

**Abbey Luneau.**, aluneau@cityonahill.org  
College and Career Counselor

## Demographics:

51% are economically disadvantaged

100% are students of color

44% are male, 56% are female

35% speak a language at home other than English

**Mission:** City on a Hill, a public high school serving grades 9-12 in urban Boston, emphasizes academic achievement, citizenship, teacher leadership, and public accountability. We seek to graduate responsible, resourceful, and respectful democratic citizens prepared to advance community, culture and commerce, and to compete in the 21<sup>st</sup> century.

**History:** We were and are a forerunner in the charter school movement. The City on a Hill Network recently celebrated its 20<sup>th</sup> anniversary. City on a Hill Dudley Square is new to the network and graduated its first senior class in 2017.

**The School:** As a charter public school, students are admitted to City on a Hill through a lottery system. They do not need to pass any exams or meet any qualifications beyond

Boston residency; by state law we cannot practice selective admission. This gives students of varied backgrounds and academic achievement the chance to compete and succeed in a challenging scholastic environment. City on a Hill does not sort its students into ability-leveled classes. We believe that all students can learn given the opportunity to meet universally-applied, high academic standards.

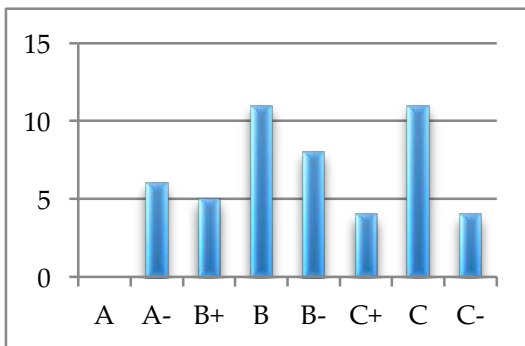
## Grading Policies

**Proficiencies:** Students are given cumulative exams in all subjects at mid-year and at the end of the 4<sup>th</sup> quarter. Proficiencies count for 20% of student’s final grade.

**Juries:** The final week of school is devoted to testing students’ ability to demonstrate their knowledge in front of a panel of teachers, peers, and community member. Each student gives a presentation illustrating their grasp of core knowledge in the subject contact as their field questions from the jurors. Jurors then evaluate the student’s oral performance.

**“Not Yet Proficient” (NYP):** City on a Hill students are held to a higher academic standard than their colleagues in urban public schools. All work completed must earn a 70% or higher in order for the student to receive credit. Essays, tests, quizzes, juries, and proficiencies are all measured by this standard. If a student earns an NYP for a quarter, they do not receive any grade points towards their average. If a student averages an NYP for the school year, they are required to attend summer school.

## Grade Distribution:



## ACT Data:

All students are required to take the ACT two times, with the option of a third test during their senior year.

Median Score: 17  
Average Score: 17

Percent Earned	Letter Grade	Grade Points
97% or above	A+	4.3
93-97%	A	4.0
90%-92%	A-	3.7
87%-89%	B+	3.3
83%-86%	B	3.0
80%-82%	B-	2.7
77%-79%	C+	2.3
73%-76%	C	2.0
70%-72%	C-	1.7
69% or below	NYP	0



## Curriculum and Course Offerings

**English:** All students are required to take *four years of English* in order to graduate. During senior year, students write a semester-long, literary analysis in summation of their English IV knowledge.

**Mathematics:** All students are required to take *four years of math, up to Pre-Calculus* in order to graduate. Based on the level of mathematics students test into during their freshman year, they have the option of taking Pre-Calculus or AP Calculus as a senior.

**History:** All students are required to take *three years of history* in order to graduate, including Civics, World History, and United States History. City on a Hill offers two senior level history electives: **AP United States Government and Politics** and **Constitutional Law**. Constitutional Law is a college-level law course offered to seniors and run through Suffolk University Law School. Students evaluate cases, study the law, and participate in moot court competitions.

**City Project:** *All seniors* are required to complete their studies by passing City on a Hill's capstone history course. In this course, students research current events in society and government, identify a problem in the community, and *complete 100 volunteer internship hours* at a community organization related to their topic. At the end of the year, students must present their sociological research and experience to a panel of jurors.

**Science:** All students must take *three years of science*, progressing through Unified Science, Biology, and Chemistry. Senior year, students have a choice of two science electives.

**Spanish:** All students take *at least two years of either Spanish or English as a Second Language* depending on their language background. All students graduate conversant in a second language.

*All juniors and seniors participate in college prep seminars designed to help students navigate the college process and transition to college.*

### Athletics

City on a Hill adheres to a strict policy that in order for athletes to be eligible to play sports, their overall average cannot be below a 70%.

#### Grizzlies Teams:

Basketball  
Cheerleading  
Step Squad  
Track

## City on a Hill Charter Public School Network Colleges Acceptances for the Classes of 2010-2017

Adelphi University	Endicott College	Mass College of Liberal Arts	Saint Augustine's University
Albertus Magnus College	Fairfield University	MCPHS University	Saint Michael's College
American International College	Fayetteville State University	University of Mass, Amherst	College of Saint Rose
Anna Maria College	Fisher College	University of Mass, Boston	Salem State University
Assumption College	Fitchburg State University	University of Mass, Dartmouth	Salve Regina University
Barnard College	Framingham State University	University of Mass, Lowell	Sarah Lawrence College
Barry University	Franklin and Marshall College	Merrimack College	Simmons College
Bates College	Franklin Pierce University	Mills College	Smith College
Bay State College	Georgia Perimeter College	Mitchell College	South Carolina State University
Becker College	University of Georgia	Morgan State University	Southern Conn. State University
Ben Franklin Institute of Tech.	Green Mountain College	Mount Holyoke College	University of Southern Maine
Bennington College	Hamilton College	Mount Ida College	So. New Hampshire University
Bentley University	Hampshire College	New England College	Spelman College
Bloomfield College	Hampton University	University of New Hampshire	Springfield College
Central Conn. State University	University of Hartford	University of New Haven	St. John's University
Centre College	Hartwick College	College of New Rochelle	Stonehill College
Champlain College	Hobart & William Smith Colleges	N. Carolina A&T University	Suffolk College
Clark Atlanta University	College of the Holy Cross	Northeastern University	Syracuse University
Clark University	Howard University	Occidental College	Thomas College
Clarkson University	Ithaca College	Pace University	Tougaloo College
Colby-Sawyer College	Johnson & Wales University	Pine Manor College	Tuskegee University
Connecticut College	Kalamazoo College	Providence College	Union College
Curry College	Keene State College	Quinnipiac University	Utica College
Eastern Conn. State University	La Salle University	Regis College	Wellesley College
Eckerd College	Lasell College	Rhode Island College	Wentworth Institute of Tech.
Elmira College	Lawrence University	University of Rhode Island	Western New England University
Elms College	Lehigh University	University of Rochester	Westfield State University
Elon University	Lemoyne College	Roger Williams University	Wheelock College
Emerson College	Lesley University	Sacred Heart University	Worcester Polytechnic Institute
Emmanuel College	University of Maine	Saint Anselm College	Worcester State University